

# Prevent >> Control >> Conquer

Health is precious, and prevention is what it takes to maintain it. Some of us need to be extra careful and act timely to guard the vital organs that anchor our overall health.

We bring to you three non-invasive and painless investigations which can be added to your health check-up regime, for you to have an extra edge over the caution you are already taking. Review each and go for the ones that you might need, for a nominal extra cost.

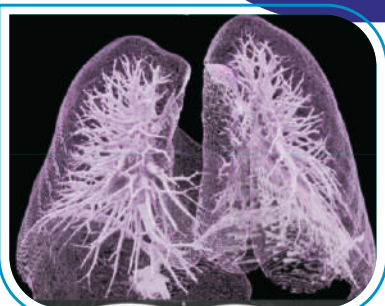


## Low Dose CT Lung Screening @ Rs. 1650

### Simple Procedure, Lifesaving Impact

#### Recommended for:

- Age 50-80
- Active smoker or quit in the last 15 years (Pack years → 20)
- Exposure to tobacco, pollution, chemicals, or toxins
- Prior lung issues or family history of lung cancer
- Genetic problems



Research shows smoking increases the risk by 20 times.

- The process involves a low-dose radiation CT Scan
- Fast, non-invasive and painless



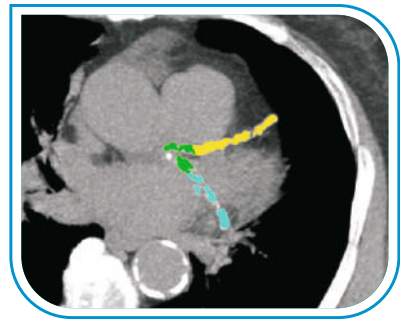


## Coronary Screening @ Rs. 3850 (Calcium Deposit Test)

### Join the fight, treat your heart right

Recommended for asymptomatic adults,  
age 40 or older with at least one risk factor :

- Family history of heart disease
- Smoking history
- High Cholesterol, High Blood Pressure, Diabetes or Obesity



## Liver Elastography / Fibroscan @ Rs.1650

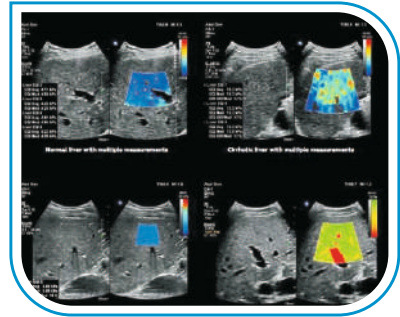
### For accurate liver health assessment

#### Recommended for:

- Cirrhosis patients
- HbSAg+, HCV+ individuals
- Chronic alcoholics
- Obesity or fatty liver patients

#### Fibro Scan:

- Rapid, painless technique
- Immediate results
- Good diagnostic accuracy



**For Appointments Call: 02692 - 228666**

Shree Krishna Hospital, Gokal Nagar, Karamsad – 388 325  
[thehealingtree.org](http://thehealingtree.org) | [info@charutarhealth.org](mailto:info@charutarhealth.org)

Accredited for Hospital | Blood Bank Diagnostic Laboratories | Imaging Services.



By Shree Krishna Hospital